

General

RouteWarePRO 3.0 delivers major new features and flexibility to the Systems Professional providing a fully functional Control & Monitor software GUI. The user can custom tailor the GUI to suit individual needs and tastes for nearly any USC hardware installation.



Within minutes, you can install the software and start controlling a USC switching system remotely. The user can customize the GUI on the fly, or by editing simple text files. Screen colors, input and output channel designations, panel names and labels can be

easily added or changed too, or even the title displayed at the top of the GUI. Examples are provided on the installation media.

The user can also view existing connections on the unit under control by selecting the Connections Screen (third tab). Here, the user can view the numbered channels or the user's text designations. A total of six screens assist the user in managing their switching assets in a clean and efficient graphical interface.

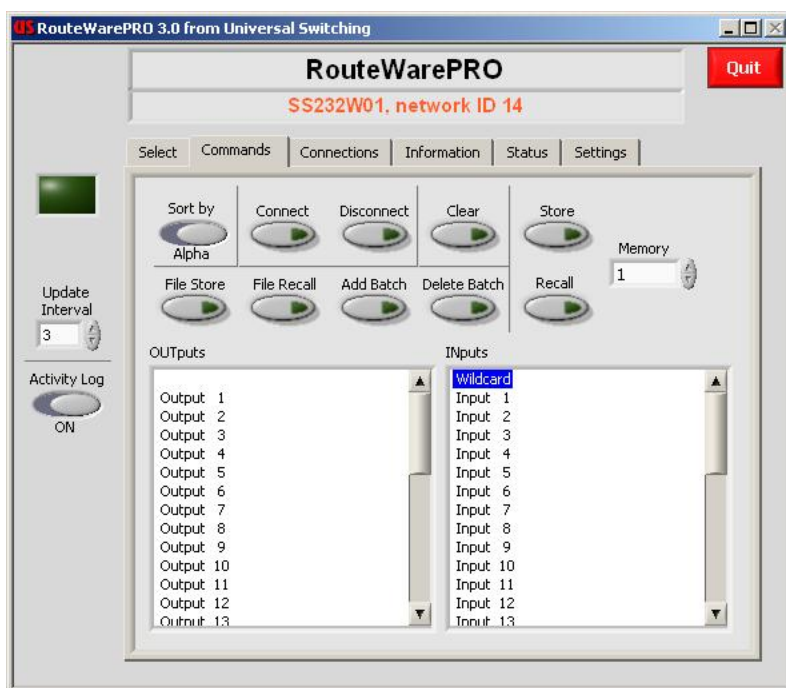
Features

- Includes support for Ethernet, GPIB and Serial
- On-the-fly user configurable I/O names and designations
- Easy and quick program setup with InstallShield
- Control most standard switching products from USC
- User configurable screen colors and labels
- Store and recall configurations on the fly
- Easy to view connection tables
- Informative real time Status and Information screens
- Control multiple units with a simple click
- Log all actions for archiving

New for Version 3.0

- Sophisticated "auto-discovery" of available network attached USC hardware devices simplifies initial application setup
- Sort input and outputs by I/O number or by user channel/port names with the click of a mouse
- Fully scalable user windows for easy viewing of larger configurations
- "On the fly" input and output naming (channel or part names) within RWP3
- Integrated screen color picker to customize "panels" for desired effects
- Multiple user OS support for different users on the same work station can either share settings and I/O names, or have custom program settings for their login
- Improved status with more indicators, plain English responses and handy tool hints
- Multiple instance support to operate multiple devices or device "panels" from a single computer
- Interlock control to prevent accidental user disconnects
- System diagnostic report generation for streamlining support of connected USC devices

Commands Screen



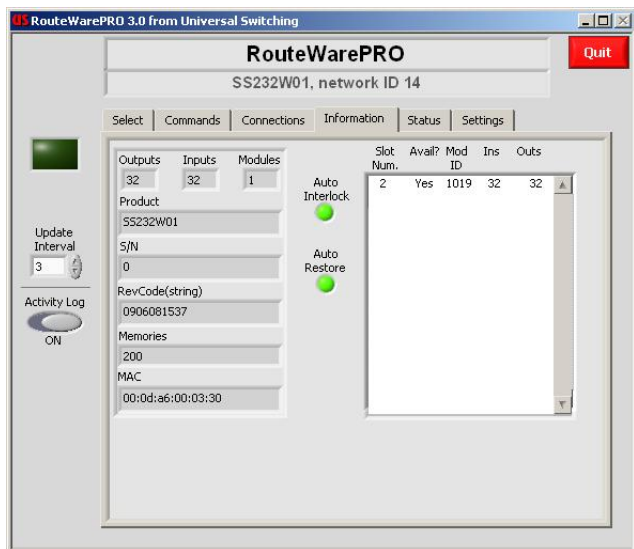
At the Commands Screen, the user can choose an input and an output, then pick an action (Connect, Disconnect, or Query), or Store and Recall complete configurations from the unit's RAM. Channel port names can be edited here too.

ROUTEWAREPRO 3-0

Multiple Screens

The RouteWare GUI provides six tabbed screens to control and monitor both the switching configuration and the remote interfaces, plus error and troubleshooting screens.

Information Tab



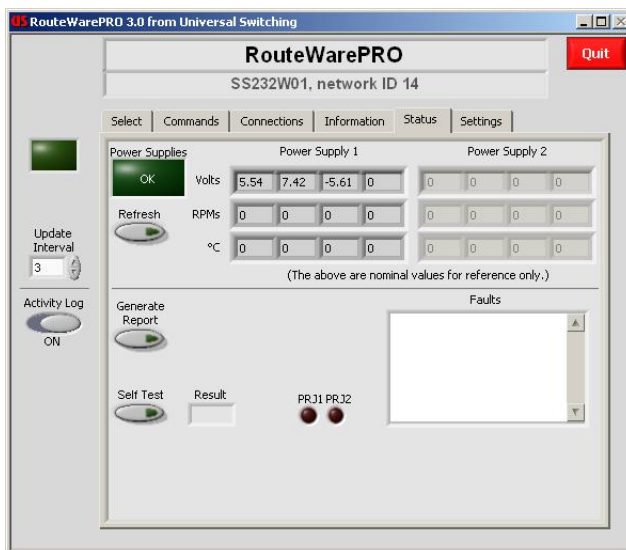
Panel Selection Tab



Connections Tab



Status Tab



Control Format Compatibility

Series G2 with C710, C720 or C820 type CPUs
System S2560x
System S2561x
System S2562x
System S6025x
System S6400x
System VSU1 or VSU2 with Ethernet
(not compatible with C700 type CPU units)

Control Limits

Number of inputs1 to 1024
Number of outputs1 to 1024
Number of "levels"1 to 16

System Requirements

PC with a Pentium 200MHz or higher processor
Microsoft Windows Vista,(x64 or x86), XP or 2000 operating systems
128MBytes RAM minimum (256MBytes recommended)
Hard disk space, 3000Meg minimum
CD-ROM drive needed
800x600 or higher resolution monitor
Microsoft mouse or compatible pointing device

Universal Switching's policy is one of continuous development, and consequently the company reserves the right to vary from the descriptions and specifications shown in this publication.